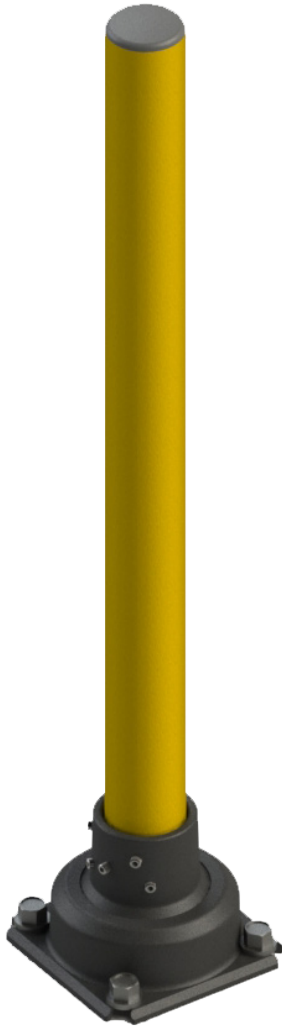




# Rebounding Steel Bollard Type 1

PROTECTIVE GUARDING - SLOWSTOP®

SPEC SHEET | P/N **SS-T1Y-100**



## Product Specifications

Color	RAL 1023 Yellow Pipe on RAL 9005 Black Pedestal
Diameter	76,1mm (5mm wall)
Impact Rating	7.000 joules, 128,8 kN
Temperature Rating	-40°C - 70°C
Pipe Coating	EN-ISO 1461 Galvanized + Polyester Powder Coating
Cast-Iron Coating	Environmentally Friendly Water-based KTL Coating + Polyester Powder Coating, C5I corrosion resistance.
Set Screws	Five (5) M12 x 1,75, 6mm Hex
Anchor Screws	Four (4) M16x140 Concrete
Cap	Black Plastic

## Recommended Uses

Light duty
Equipment and storage rack guarding
Pedestrian safety
Access denial
Fuel and utility protection

## Impact Chart

Impact Angle	90°
Rating	7.000 joules
Mass (kg)	Speed (kph)
500	19.0
1,000	13.5
1,500	11.0
2,000	9.5
3,000	7.8
4,000	6.7
5,000	6.0
6,000	5.5
7,500	4.9

4955 Stout Drive, San Antonio, TX 78219  
 (210) 736-4477 | 1-800-736-5256 | info@impactrecovery.com  
 impactrecovery.com  
 November 2024



©2024 Impact Recovery Systems, Inc.® All rights reserved. Impact Recovery Systems, OneBase, and Tuff Curb are registered trademarks of Impact Recovery Systems, Inc.® SlowStop® is a registered trademark of SlowStop Guarding Systems, LLC.®  
 The products mentioned in this document are covered by the following U.S. and international patent numbers: 7,195,422 | 7,621,691 | D937,700 | D620,823 | D620,824 | D620,825 | EP 2 267 225 | EP 2 888 412 | 9,938,677 | 11,136,735 | D932,875. Other U.S. and International patents pending.